



coral voip media gateway

DELIVERING INTELLIGENT COMMUNICATIONS TO THE SMALL BRANCH OFFICE





PRODUCT OVERVIEW

Designed specifically for enterprise applications, Coral VoIP-32/64 Series gateways make use of existing broadband access equipment to connect to any standards-based VoIP network.

The Coral VoIP-32/64 Series gateways meet the requirements of enterprises that want to connect their ISDN equipment, such as PBXs, through E1 / PRI interface to an IP network .

It finds applications in :

- Enterprises with branch offices and remote offices, including SOHOs.
- Enterprises seeking low cost Voice applications over IP while protecting investments made in existing legacy equipment.
- Enterprises wishing to implement Voice over IP through a gradual, transparent, and cost-effective migration.
- Multi-tenant / multi-dwelling units and premises wishing to implement Voice over IP while maintaining existing wiring and handsets.
- Enterprises looking to implement secure RTP (SRTP) and secure SIP (SIPS) in the future.

SOLUTION OVERVIEW

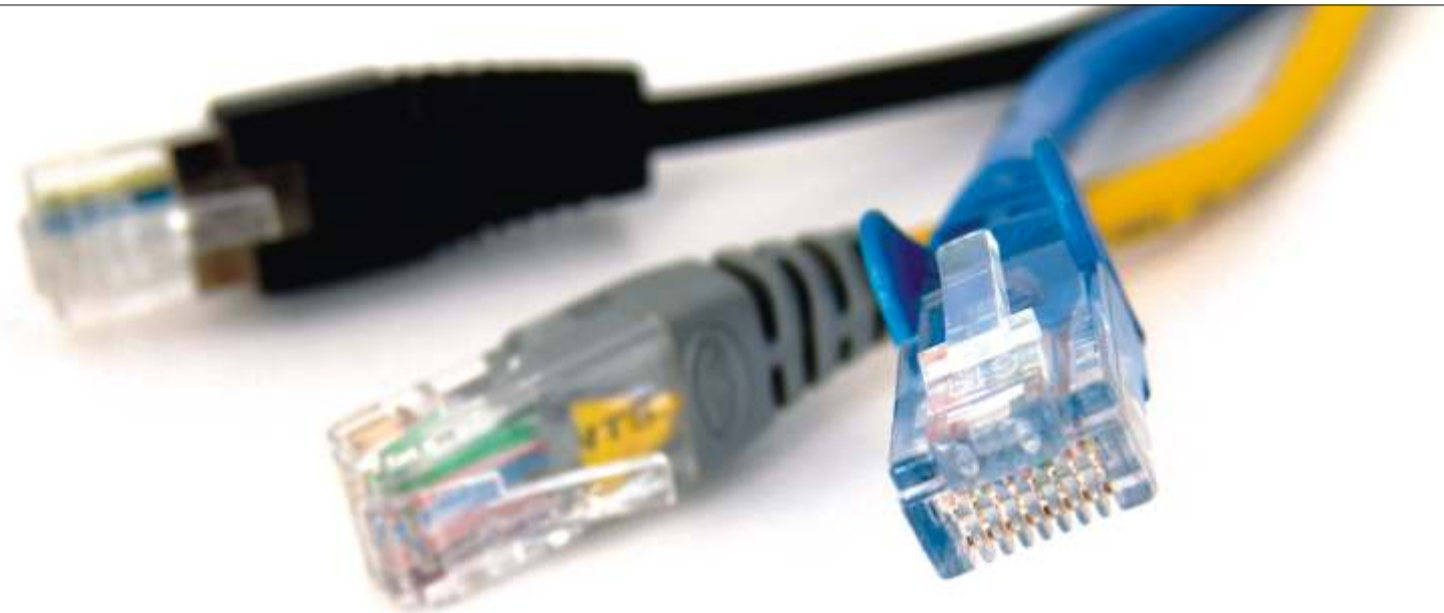
The Coral VoIP-32/64 Media Gateway is part of a portfolio of gateways that extend the Coral Access Communications Applications from headquarters to branch locations, seamlessly integrating the enterprise communication across multiple locations. The VoIP-32/64 is available in two compact models to serve the needs of very small branch offices requiring one or two PRI Interfaces. It is a multi-functional device combining VoIP, IAD & Gateway on a flexible and powerful platform. It supports SIP Trunking, PBX IP Trunking, and PSTN access for local VoIP equipments .

Standard units come with support for IP telephony endpoints with local digital trunks, including PRI and E1/T1. Design incorporates is a firewall designed to support the security of voice over an IP network. It can be connected to an external WAN device through the fixed 100Mb Ethernet WAN router port.

T.38 FoIP, fax bypass, and modem bypass capabilities ensure that the Coral VoIP-32/64 gateways seamlessly transport voice and data services. The Coral VoIP-32/64 gateways offer flexibility and scalability for VoIP network integration and low-bandwidth voice.

With configurable NT/ TE, E1, PRI ports, call-switching, and user-programmable call routing (including caller/called ID), Coral VoIP-32/64 gateways integrate smoothly into existing PBX and PSTN networks.





KEY BENEFITS

- Feature-rich carrier grade product.
- 1 or 2 ISDN E1 PRI interface ports.
- 30 or 60 simultaneous calls.
- Deployable in SIP VoIP networks.
- Flexible call handling.
- Security features: SSH, Proven voice algorithms implemented on dedicated DSP engine for enhanced voice quality on each interface card.
- Fax over IP support, including T.38.
- Multiple codec support (G.711/G.729/G.723)
- Remote management capabilities.

CORAL VOIP GATEWAY HARDWARE MODELS

Coral VoIP-32 1 x PRI/E1 cards.

- One ISDN E1 PRI ports software configurable.
- Up to 30 simultaneous calls.
- NT/TE software configurable.

Coral VoIP-64 2 x PRI/E1 cards.

- Two ISDN E1 PRI ports software configurable.
- NT/TE software configurable.
- Up to 60 simultaneous calls.

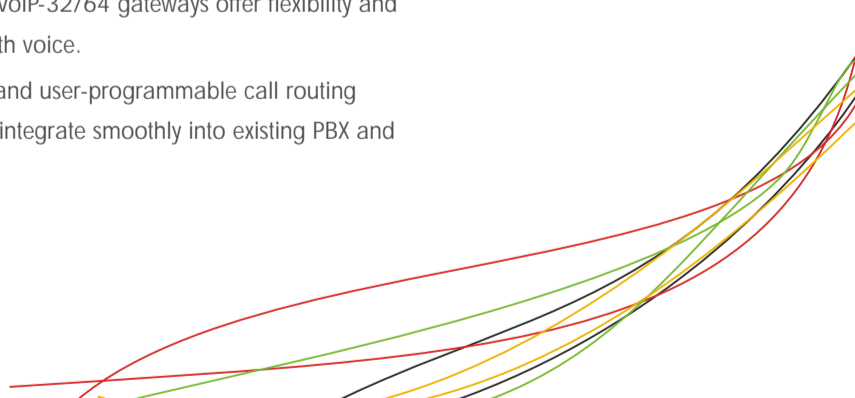
APPLICATIONS

The Coral VoIP-32/64 gateways allow any office to use an existing IP network for low cost voice communication over IP channels.

Coral gateways link any standard ISDN E1 PRI connection to the IP network and deliver the clarity of toll-quality voice for a comprehensive VoIP solution.

T.38 FoIP, fax bypass, and modem bypass capabilities ensure that the Coral VoIP-32/64 gateways seamlessly transport voice and data services. The Coral VoIP-32/64 gateways offer flexibility and scalability for VoIP network integration and low-bandwidth voice.

With configurable NT/ TE, E1, PRI ports, call-switching, and user-programmable call routing (including caller/called ID), Coral VoIP-32/64 gateways integrate smoothly into existing PBX and PSTN networks.



TECHNICAL SPECIFICATIONS

The Coral VoIP Media Gateway is available in two variants providing either 1 or 2 E1/PRI channels.

VOICE PROCESSING

- Voice Coders: G.711 (A-law, μ -law), G.723.1, G.726, G.729a/b
- G.168 echo cancellation
- DTMF detection and generation
- Carrier tone detection and generation
- Silence detection / suppression
- Adjusts Noise level with integrated software
- Configurable dejitter buffer
- Configurable transmit packet length
- RTP/RTCP -RFC 1889, RFC 1890, RFC 2833, RFC 3389

FAX AND MODEM SUPPORT

- Fax over IP
- T.38 Fax relay (9.6 k, 14.4 k)
- G.711 Fax and Modem Bypass
- Clear channel (G.711) or T.38 IP Telephony Protocol
- SIP

MANAGEMENT

- HTTP, FTP, TFTP, HTTPS
- Auto-provisioning for VoIP parameters
- Automatic firmware download
- User-friendly web pages for VoIP parameters

ISDN SIGNALING

- ISDN NI-2 (US T1 PRI)
- ISDN DMS100 (US T1 PRI)
- ISDN 5ESS (US T1 PRI)
- Euro ISDN EDSS-1 / ETSI PRI/NET5
- ETS 300 011 (ISDN PRI UNI)

- ETS 300 012-1 (ITU-T I.430)
- ISDN speech, audio and data (Fax Gr 4, UDI 64)

VOICE ROUTING

- Local switching
- Interface hunt groups
- Routing criteria

INTERFACE

- Calling/called party number
- ISDN bearer capability

NUMBER MANIPULATION FUNCTIONS

- Replace numbers
- Add/remove digits
- Multiple remote gateways
- LCR based on number of calls per user

QOS MARKING

- TOS / DiffServ
- IEEE 802.1p/Q

WAN CONNECTION

- 1 x 10/100 BaseT Ethernet RJ-45 connector

PHYSICAL SPECIFICATIONS

- Operating temperature: 0°C to 40°C
- Storage temperature: -20°C to +70°C
- Humidity: up to 85 %, non-condensing
- Internal 220 VAC or 48V DC power supply
- 1U rack mount
- Dimensions
 - Height : 4.4 cm (1.73 in.) approx.
 - Width : 44.5 cm (17.5 in.) approx.
 - Width : 48.5 cm (19 in.) approx. (mounting brackets)
 - Depth : 27.5 cm (11 in.) approx

Inspiring convergence through technological innovations and turning the broadband dream to reality.
Experience the "Coral phenomena"!!!

Coral Telecom Limited

E2, Sector 63
Noida - 201301, INDIA
T: +91-120-4035840-43
F: +91-120-4035888
E: corporate@coraltele.com
www.coraltele.com

ISO 9001 REGISTERED



Branch Offices:

AHMEDABAD - T: +91-79-40063377/78, F: +91-79-40063377/78, E: ahmedabad@coraltele.com BANGALORE - T: +91-80-25540047/25545755, F: +91-80-25545755, E: bangalore@coraltele.com BARODA - T: +91-265-2320211, F: +91-265-2320211, E: brd@coraltele.com BHUBANESHWAR - T: +91-674-2547118/2545896, E: benzfab2001@yahoo.com/sales@benzfab.com CHANDIGARH - T: +91-1729824443377-2565150/2582618/2561388, E: gaurav_ideas@hotmail.com CHENNAI - T: +91-44-24995590/91, F: +91-44-24995591, E: chennai@coraltele.com COCHIN - T: +91-484-2321322, F: +91-484-2321322, E: cochin@coraltele.com COIMBATORE - T: +91-422-2218088/89/90, F: +91-422-2218089, E: coimbatore@coraltele.com DELHI - T: +91-11-26388345/46/62, F: +91-11-26388345, E: delhi@coraltele.com GOA - T: +91-832-2438530/6641475/6641476, E: goa@coraltele.com HYDERABAD - T: +91-40-23226809/10/23220134, F: +91-40-23220134, E: hyderabad@coraltele.com INDORE - T: +91-731-2539834, F: +91-731-2539834 E: indore@coraltele.com JAIPUR - T: +91-141-3012615, F: +91-141-3012615, E: jaipur@coraltele.com KOLKATA - T: +91-33-22835643/22830249, E: dhawankamal@hotmail.com MUMBAI - T: +91-22-26672171/2032/2273, 26650757/66952621 F: +91-22-26674062, E: mumbai@coraltele.com PUNE - T: +91-20-25420022/44, F: +91-20-25420022/44, E: pune@coraltele.com DUBAI - T: +971505594409, +971506584741, E: saurabh@coraltele.com; v.vijay@coraltele.com